

Eco Pre-stained Protein Ladder Datasheet

12 SEP 2022

Catalog Number	Size	Range
PAL-ECL-500	500 µl	15 to 170 kDa

Storage Conditions

Stable for up to 2 weeks at 25°C.
Stable for up to 3 months at 4°C.
Stable for up to 24 months at -20°C.

Description

The Eco Pre-stained Protein Ladder is a combination of 9 pre-stained proteins with molecular weights from 15 to 170 kDa. The 9 recombinant proteins are covalently coupled with blue chromophore, except for 1 green band at 15 kDa, a red band at 70 kDa and a newly designed peacock green band at 60 kDa serve as reference bands. The Eco Pre-stained Protein Ladder is designed for monitoring protein separation during SDS-polyacrylamide gel electrophoresis, verification of Western transfer efficiency on membranes (PVDF, nylon or nitrocellulose) and for approximate sizing of proteins. The ladder is supplied in gel loading buffer and is ready to use.

Kit Content(s)

Eco Pre-stained Protein Ladder 250µl x 2 vial

Storage Buffer

Approximately 0.2~0.4 mg/ml of each protein in buffer: 20 mM Trisphosphate pH 7.5, 2% SDS, 0.2 mM Dithiothreitol, 3.6 M Urea, and 15% (v/v) Glycerol.

Required materials but not provided

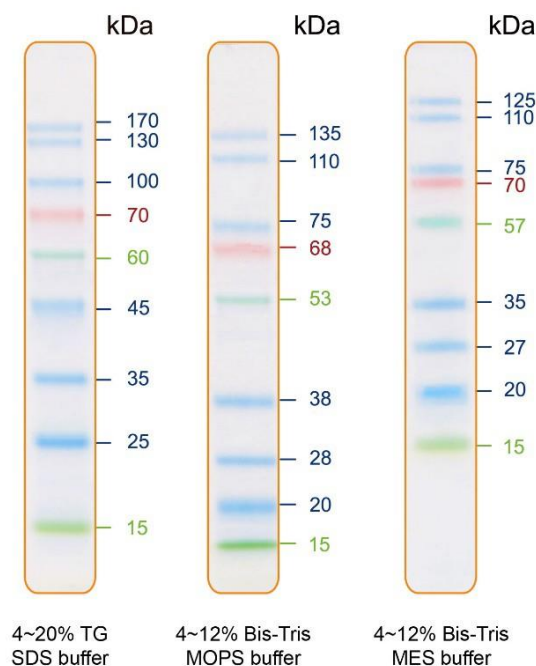
- Vertical Electrophoresis system
- Power supplies
- Vortex or equivalent
- Microcentrifuge

Reaction Setup

3 µl or 5 µl per loading for clear visualization during electrophoresis on 15-well or 10-well mini-gel, respectively. 2.5 µl per well for general Western transferring.

Guide for Molecular Weight Estimation (kDa)

Refer to the Eco Pre-stained Protein Ladder patterns in various electrophoresis conditions:



Important notes

The molecular weight of each protein (kDa) was measured against an unstained protein ladder in every electrophoresis condition. Additional data should be considered for a more accurate adjustment.